



**RJ-BOT
INDUSTRIAL GROUP**

Sewer Inspection Robot *Products Catalogue*



www.rj-bot.com / sales@rj-bot.com

Add: 6F chengda Edu Science & Tech Inno Park Panyu District, Guangzhou, China

ROBOT K18

Applicable pipe diameter: >300mm



Introduction

The body is made of stainless steel, with airtight protection and IP68 fully waterproof design, and can be used immersed in water. With the control box: integrated working computer, 9-inch high-definition color LCD display, one-button control of forward and backward movement, 2 million high-definition pixels, infrared recording, working condition information entry, control of rotating camera, and the cable of the reel is standardly 100 meters to assist in real-time viewing of the working distance.

Features

- Sealed
IP68 highest waterproof
- HD camera
HD acquisition camera
- Obstacle detection
120° vertical precision
- Precise positioning
Centimeter-level measurement
- Working video
Information status record
- Photo
Infrared night vision

Products



ROBOT K20

Applicable pipe diameter: >250mm



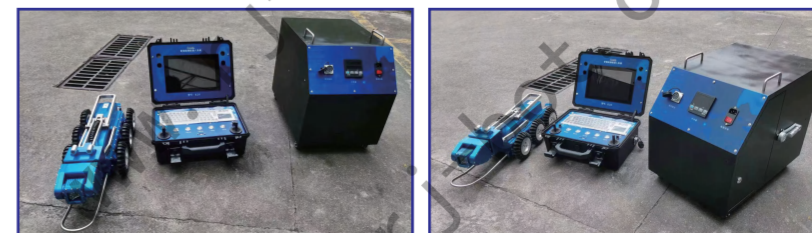
Introduction

The body is made of stainless steel shell, airtight protection, IP68 fully waterproof design, and can be immersed in water. With control box control: integrated working condition computer, 9-inch high-definition color LCD display, one-button control of forward and backward movement, 2 million high-definition pixels, infrared recording, working condition information input, can control the rotation of the camera, the cable of the reel is standardly 100 meters, assisting in real-time viewing of the working distance.

Features

- Sealed
IP68 highest waterproof
- HD camera
HD acquisition camera
- Obstacle detection
120° vertical precision
- Precise positioning
Centimeter-level measurement
- Working video
Information status record
- Photo
Infrared night vision

Products



ROBOT K22

Applicable pipe diameter: >300mm

Tablet terminal



Power Bank

Cable Reel



Robot

Features



Sealed

IP68 highest waterproof



HD camera

HD acquisition camera



Original function

Offline operation series



Precise positioning

Centimeter-level measurement



Working video

Information status record



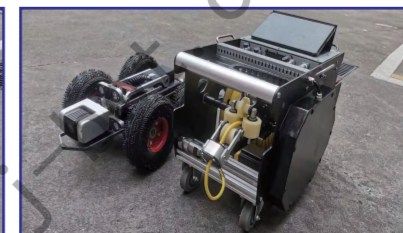
Report

Directly issued report

Introduction

The body is made of stainless steel shell, airtight protection, IP68 fully waterproof design, and can be immersed in water. With tablet control: 8-core powerful processor, 10.4 high-definition color LCD display, to achieve intelligence. 2 million high-definition pixels, infrared recording, working condition information input, can control the rotating camera, the cable of the reel is standardly 120 meters, assisting in real-time viewing of the working distance, original offline operation series, can be used normally in any venue, and the inspection report can be directly output after the inspection.

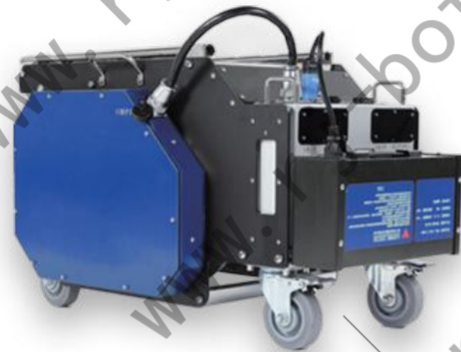
Products



ROBOT K22-B

Applicable pipe diameter: >190mm

Tablet terminal



Power Bank

Cable Reel



Robot

Features



Sealed
IP68 highest waterproof



HD camera
HD acquisition camera



Original function
Offline operation series



Precise positioning
Centimeter-level measurement



Working video
Information status record

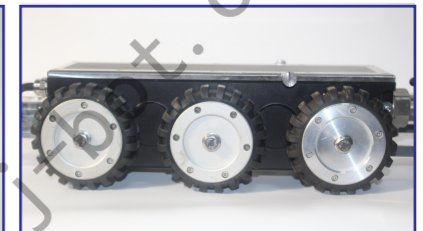
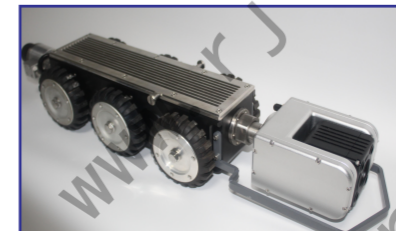


Report
Directly issued report

Introduction

The body is made of stainless steel, airtight protection, IP68 fully waterproof design, and can be immersed in water. With tablet control: 8-core powerful processor, 10.4 high-definition color LCD display, to achieve intelligence. 2 million high-definition pixels, infrared recording, working condition information input, can control the rotating camera, the cable of the reel is standard 120 meters, assisting in real-time viewing of the working distance, original offline operation series, can be used normally in any venue, and the inspection report can be directly output after the inspection.

Products



Parameters

		K18	K20	K22	K22-B
Product					
Imaging System	Applicable pipe diameter(mm)	>300mm	>250mm	>300mm	>190mm
	Camera Pixels	200W	200W	200W	200W
Robot body	Size(mm)	700*245*215	780*223*210	600*210*175	616*150*110
	Weight	15.6kg	16.7kg	19kg	19kg
	Lifting Height	210mm	210mm	250mm	
	Protection level	IP68	IP68	IP68	IP68
	Gradeability	<30°	<30°	<45°	<45°
Control Platform	Controller Type	Control box	Control box	Tablet terminal	Tablet terminal
	Size(mm)	405*320*180	405*320*180	10.4 inches	10.4 inches
	Resolution	1920×1080	1920×1080	2000×1200	2000×1200
Cable Reel	Size(mm)	460*370*440	530*360*400	560*350*430	560*350*430
	Cable tension	100kg	100kg	200kg	200kg
	Cable length	100m	100m	120m	120m

GROUP PROFILE

PIPELINE ROBOT RESEARCH AND DEVELOPMENT



Guangzhou RJ-Bot Industrial Group Co., LTD, headquartered in Guangzhou with branches in Zhanjiang, is an international high-tech enterprise specializing in the research and production of robots for specialized operational scenarios. We offer over 50 specialized robots for various tasks, including commercial kitchen exhaust duct cleaning, ventilation duct cleaning, municipal pipeline inspection, smart patrol inspection.

RJ-Bot operates sales outlets globally, serving thousands of industry clients with a focus on domestic and international markets. Praised for our products and services, we are a high-tech enterprise with software copyrights, patents, and extensive testing reports. We adhere to management systems like ISO9001 and hold certifications such as CE, ROHS, FCC, and REACH.

RJ-Bot has nearly 150 employees, including top-tier product development personnel. We have dedicated teams for product development, project planning, marketing, sales, engineering, and after-sales maintenance.

Additionally, RJ-Bot owns multiple self-operated and strategically cooperative engineering companies, which contribute to the iterative development of our products and accumulate rich engineering experience.



PATENTS

37

5

Design patent

12

Trademark

20

Utility Model Patent

R&D ADVANTAGE

Leading the industry with innovation

High-tech enterprises continue to invest in research, quickly respond to product customization needs, build various products and applications, and use brand strength to widen the gap in homogeneity.

Manufacturing Strength

Win trust with quality

We produce strictly in accordance with quality management standards and have Zhanjiang precision manufacturing center, with stable quality and fast delivery.

